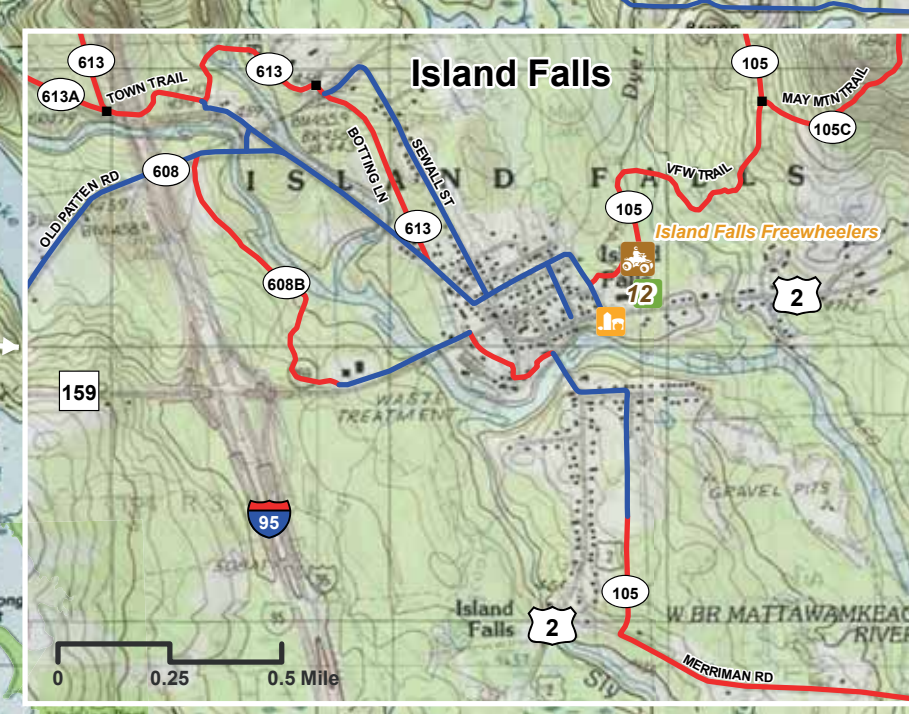
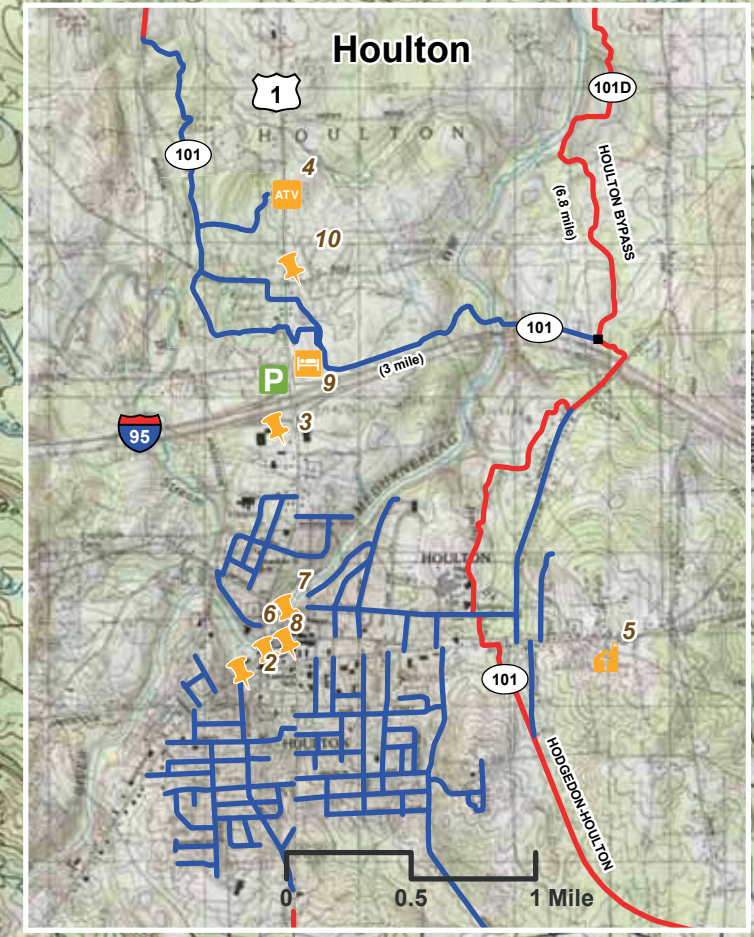
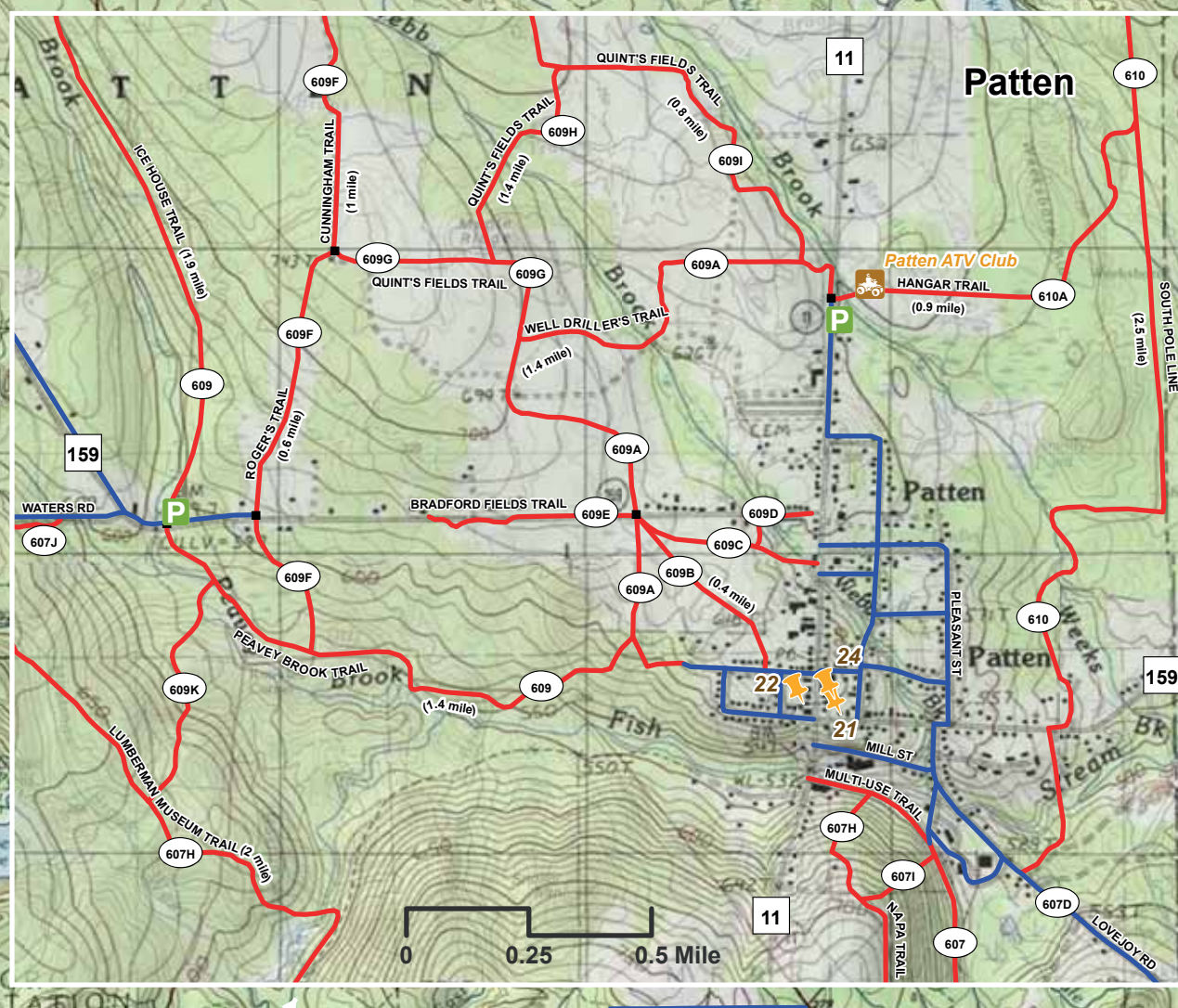
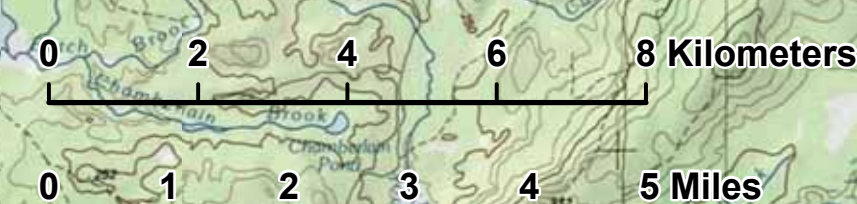


Southern Aroostook ATV Trail Map

2025-2026 (Fourth Edition)



Disclaimer, Warning, and Copy Right:
Respect land and landowners. Stay on the marked trails. Observe all ATV laws and carry out any and all litter. Users of this map shall hold all ATV clubs posted on this map, the University of Maine at Presque Isle GIS Laboratory, map publisher, advertisers, property owners, and any parties who contributed to this publication harmless for any physical injury or property damage incurred through the use of the trails. Said parties accept absolutely no responsibilities as to whether trails are open or the condition of the trails. Since trails may change frequently for many reasons, or may be shown inaccurately on the map, this guide is not intended for navigation but for general information. Please contact local ATV clubs for more detailed information about the trails. The brochure may not be reproduced in whole or in part without written permission of Knowles Corner ATV Club of Oakfield, Maine.

Disclaimer by Irving Woodlands:
Annual landowner's permits are granted to the following clubs. In order to utilize trails within Irving Woodlands properties, individuals must: (1) be an active member of one of the listed clubs; (2) display a current year club sticker on ATV; (3) display a current year ATV Maine sticker on ATV; and (4) stay on designated trails only.

- Allagash ATV Club
- Aroostook Riders ATV Club
- Aroostook Valley ATV Club
- Big 13 ATV Club
- Borden ATV Club
- Caribou ATV Club
- Eagle Lake ATV Trail Blazers
- Franchville ATV Riders Club
- Grand Isle ATV Club
- Island Falls Free Wheelers ATV Club
- Katahdin Valley Wheelers ATV Club
- Knowles Corner ATV Club
- Madawaska ATV Club
- Masards ATV Club
- Northern Ridge Runners
- Patten ATV Club
- Portage Lakers ATV Club
- Shin Pond Trail Riders Club
- Sinclair ATV Club
- Sly Brook Trail Blazers
- St. Agatha ATV Club
- Star City ATV Club
- Van Buren ATV Club
- Valley ATV Riders Club

Important Maine ATV laws:
"A properly registered ATV may be operated on a public way only the distance necessary, but in no case to exceed 1500 feet, on the extreme right of the traveled way for the purpose of crossing, as directly as possible, a public way, bridge, overpass, underpass, sidewalk or culvert as long as that operation can be made safely and does not interfere with traffic approaching from either direction on the public way." "Except for the land on which the operator is domiciled, a person under 10 years of age may not operate an ATV. A child 10-15 years old can operate an ATV if they have successfully completed an ATV training course and is accompanied by an adult." "Persons under 18 may not operate or be carried on an ATV without protective headgear." The statewide width limit for ATVs & UTVs is 65 inches and the weight limit is 2,000 lbs. Always stay to the right when riding along designated ATV access routes." Visit www.maine.gov/ivats/snowmobile/atv/laws-rules.html for a complete list of Maine's ATV laws and rules.

The map was initially made in 2019 and last updated in spring 2025 at the University of Maine at Presque Isle GIS Laboratory by Dr. Chuanzeng Wang. Chuck Loucka has been the Principal Project Coordinator. This update was assisted by club representatives Dennis Brackett, Lewis & Paula Conrad, Blaine King, Beverly Lane, Lisa Larue, Steve Rouse, Greg Smith, and Leonard Wide. Graphic design on the ads page was by Gushman & Sons.

**Respect Private Property
Stay on Marked Trails**

Don't Drink & Ride!

Please consider donating to a local ATV club to help maintain the Maine ATV trail system. Thank you for your support!

- Club Locations
- ATV Service
- ATV Service/Rentals
- Churches
- Eating Sponsors
- Gas Sponsors
- Groceries
- Lodging Sponsors
- Other Sponsors
- Real Estate
- Border Crossing
- Campground
- Lean-to
- Park & Ride
- Picnic/Rest Area
- Trailhead
- Landmark or Lookout
- ATV Access/MATS
- Access/Connector Trail
- Public Conserved Land

Index	Business Name	Address	Town	Phone
1	Hidden Spring Winery	1057 White Settlement Rd.	Hodgdon	532-0753
2	Daigle Oil Co.	50 Bangor St.	Houlton	532-0871
3	Andy's IGA Foodliner	132 North St.	Houlton	532-3305
4	Ride North Recreation	381 North St.	Houlton	532-4381
5	Church On The Hill	307 Military St.	Houlton	532-2783
6	Sammy's Tattoo Studio	15 Market Square, Suite 6	Houlton	532-2783
7	Bowers Funeral Home	10 Water St.	Houlton	694-4202
8	Bates Fuel	1 Kendall St.	Houlton	365-4292
9	Ivey's Motor Lodge	241 North St.	Houlton	532-4206
10	York's of Houlton	315 North St.	Houlton	532-6534
11	Birch Point	33 Birch Point Lane	Island Falls	463-2515
12	Jerry's Foodstore	63 Houlton Rd.	Island Falls	463-2828
13	Maine Synthetics	761 Sherman St.	Island Falls	694-3564
14	Vacationland Estates	70 Dow Farm Rd.	Island Falls	463-2884
15	Wilderness Pines Campground	83 West Conroy Lake Rd.	Monticello	538-4500
16	Katahdin Lodge	626 Aroostook Scenic Hwy	Moro Plantation	528-7731
17	Mt. Chase Lodge	1517 Shin Pond Rd.	Mt. Chase	528-2183
18	Shin Pond Village	1489 Shin Pond Rd.	Mt. Chase	528-2900
19	Motor Sports Doctor	1363 Shin Pond Rd.	Mt. Chase	538-8278
20	Katahdin Valley Adventures	1489 Shin Pond Rd.	Mt. Chase	528-2900
21	Ellis Family Market	5 Main St.	Patten	528-2457
22	Richardson's Hardware	10 Main St.	Patten	528-2235
23	Savage Paint & Body	338 South Patten Rd.	Patten	528-2331
24	Katahdin Trust Co.	11 Main St.	Patten	528-2211
25	Brookside Inn	2277 U.S. Rt. 2	Smyrna Mills	694-5920
26	R. C. Logging Supplies	3429 U.S. Rt. 2	Smyrna Mills	757-8691
27	Baxter's Place	92 Siberia Rd.	Stacyville	290-4119

Map projection: UTM, NAD 1983. Basemap data source: USGS, Maine GeoLibrary, ArcGIS Online.